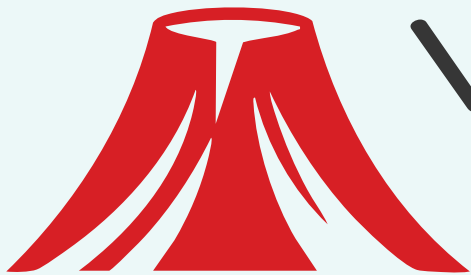


Craftmanship in hygienic cleaning tools



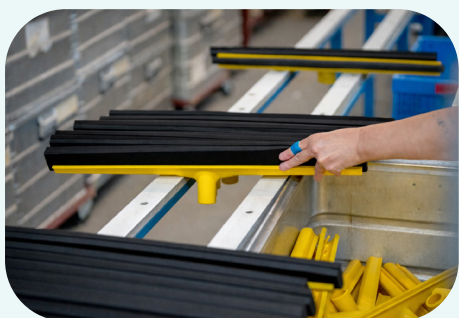
VULCAN® RUBBER

The market's leading **heavy-duty rubber**, Vulcan delivers unmatched resistance to **chemicals**, **abrasion**, and **weathering** while **lasting 4× longer than any alternative**.

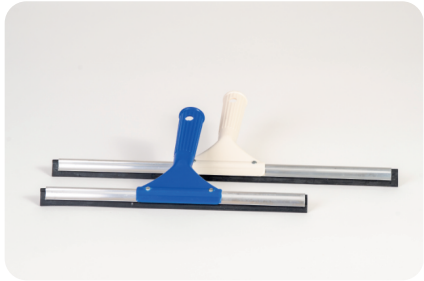
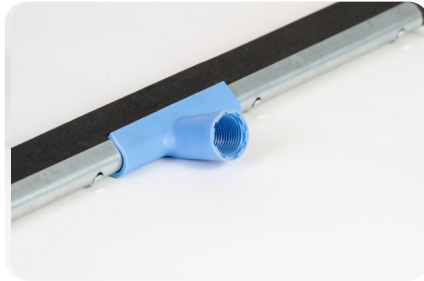
This professional favorite clears **liquids** in a single swipe, ensuring peak efficiency in the **toughest conditions**. By choosing Vulcan, you significantly reduce labor time and replacement costs.

The Professional Choice

- Maintains full mechanical integrity across extreme temperatures from -40°C to +120°C
- Highly resilient against industrial chemicals, acids and disinfectants in demanding environments
- Built to withstand frequent exposure to professional soaps and cleaning agents without degrading
- High-density construction lasts up to four times longer than standard rubber alternatives
- Delivers streak-free, one-swipe performance on both smooth and irregular surfaces







Household

Household Floor Squeegee

➤ HOUSEHOLD

Our 'Household Squeegee' is the **original Belgian floor squeegee** — a timeless design that first originated in **Belgium**.

Its distinctive **double-lip blade** effortlessly removes water from **grooves and crevices**, setting the benchmark for **effective cleaning**.

Crafted from **durable galvanized metal**, this iconic model has become one of the most recognizable squeegees around the world.

PROPERTIES

- Solid galvanized metal frame
- Screw and nut handle socket:
Fits all handles

SIZES

- 35cm / 14"
- 45cm / 18"
- 55cm / 22"
- 60cm / 24"





QuickFix

➤ HOUSEHOLD

Experience the convenience of our 'QuickFix Squeegee', inspired by our **iconic Household model**.

Designed for **speed and ease of use**, it features a **durable plastic handle holder** with a threaded design, allowing you to simply screw in the handle, no tools required.

The QuickFix saves time without compromising **strength**, making it a **standard essential** in every household.

PROPERTIES

- Galvanised metal squeegee
- Plastic threaded handle holder
- ACME or EU thread

SIZES

- 35cm / 14"
- 45cm / 18"
- 60cm / 24"





SingleFix

➤ HOUSEHOLD

The 'SingleFix Squeegee' is an **affordable** and **eco-friendly choice**, made from **80% recycled plastic**.

It's ideal both as a **cost-effective** solution for the **food industry** and as a **practical everyday item for household use**.

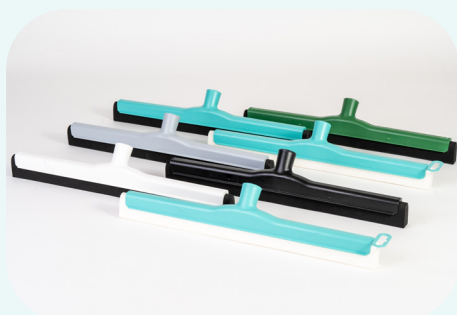
Available with either **ACME or EU thread** and an optional suspension hook for storage.

PROPERTIES

- 80% recycled plastics
- ACME or EU thread
- With or without suspension hook

SIZES

- 35cm / 14"
- 45cm / 18"
- 55cm / 22"





DoubleFix

➤ HOUSEHOLD

The 'DoubleFix Squeegee', a step up from our Single-Fix model.

Its **threaded handle holder** with a **tightening cap** securely fits **any handle**, offering **maximum compatibility and ease of use**.

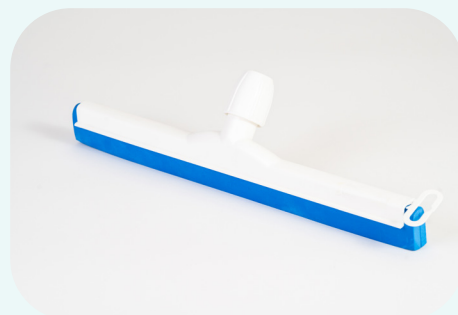
Made from **recycled plastic** and available with an optional **suspension hook**, the DoubleFix combines **convenience, versatility, and eco-friendliness** in one smart design.

PROPERTIES

- 80% recycled plastics
- ACME or EU thread
- With or without suspension hook
- Tightening cap fits all handles!

SIZES

- 35cm / 14"
- 45cm / 18"
- 55cm / 22"





Window Squeegee

➤ HOUSEHOLD

Our 'Household Window Squeegee' combines **simplicity** and **reliability**.

Featuring a **sturdy plastic handle**, **lightweight aluminum frame**, and quality **rubber blade**.

Affordable, durable, and effective — a practical essential in every household.

PROPERTIES

- Plastic handle
- Aluminum frame
- Rubber strip

SIZES

- 25cm / 10"
- 30cm / 12"
- 35cm / 14"
- 40cm / 16"
- 45cm / 18"







Professional cleaning

HeavyDuty Floor Squeegee

➤ PROFESSIONAL CLEANING

The 'Heavy Duty Floor Squeegee' is our **most robust model**, built for the toughest jobs and maximum durability.

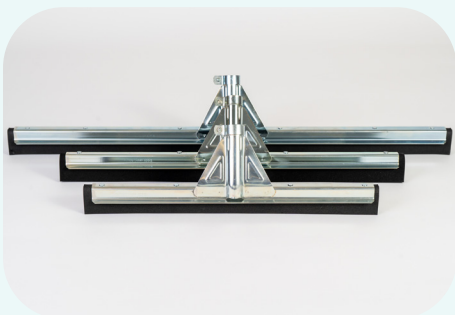
Designed for **professional use**, it features a reinforced handle holder for extra strength and **water edges** that prevent spillovers during use.

PROPERTIES

- Solid galvanized metal frame with reinforced handle socket
- Screw and nut handle socket: Fits all handles
- Splash guard prevents water from spilling over the top

SIZES

- 45cm / 18"
- 55cm / 22"
- 75cm / 30"
- 100cm / 40"





EasyFix Floor Squeegee

➤ PROFESSIONAL CLEANING

The 'EasyFix Squeegee' is a professional floor squeegee equipped with a **durable threaded plastic handle holder**.

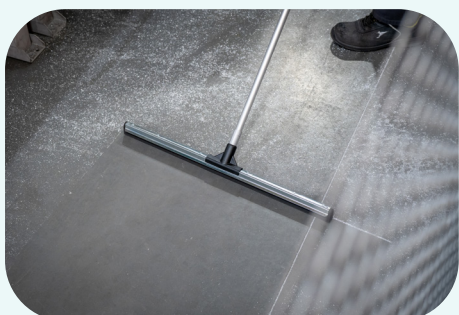
Its **water edges** prevent spillovers during use, ensuring clean and efficient performance.

PROPERTIES

- Galvanised metal squeegee with plastic threaded handle holder
- ACME or EU thread
- Splash guard prevents water from spilling over the top

SIZES

- 45cm / 18"
- 55cm / 22"
- 75cm / 30"
- 100cm / 40"





Limbo Squeegee

➤ PROFESSIONAL CLEANING

The 'Limbo Squeegee' features a **tilting handle holder** that allows smooth maneuvering under and around furniture.

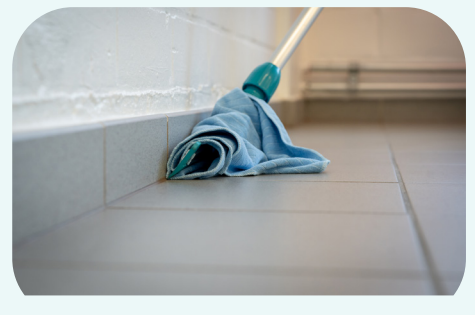
Designed for **flexibility and reach**, it easily cleans hard-to-access areas — making it ideal for office environments and tight spaces.

PROPERTIES

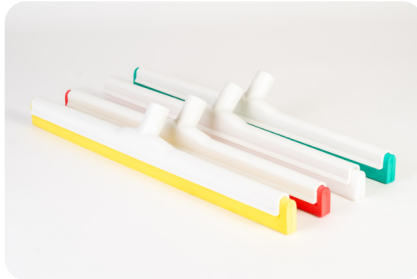
- Tightening cap fits all handles
- TPE rubber blade, hygienic and durable
- Tilting handle joint

SIZES

- 50cm / 20"







Hygienic/Food grade

SingleFix

➤ HYGIENIC/FOOD GRADE

The 'SingleFix Squeegee' is an affordable and **eco-friendly** choice, made from **80% recycled plastic**.

It's ideal both as a cost-effective solution for the **food industry** and as a practical everyday item for household use.

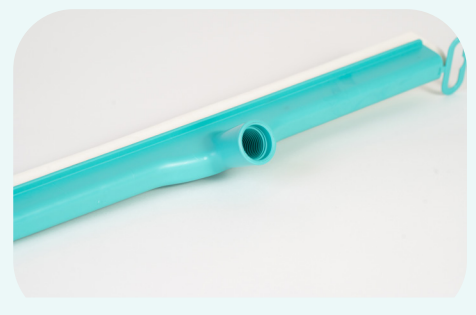
Available with either **ACME or EU thread** and an optional suspension hook for storage.

PROPERTIES

- 80% recycled plastics
- ACME or EU thread
- With or without suspension hook

SIZES

- 35cm / 14"
- 45cm / 18"
- 55cm / 22"





Hygienic Floor Squeegee

➤ HYGIENIC/FOOD GRADE

The 'Hygienic Squeegee' is specifically designed for use in **hygiene-critical environments** where only plastic tools are permitted.

To ensure maximum strength and durability, the frame is **glass-fiber reinforced**, combining compliance with robust performance.

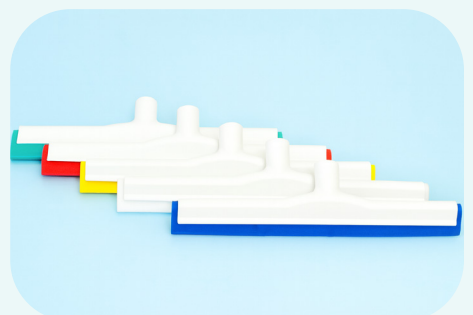
Available in **HACCP color codes**, both for the foam blade and the frame, this squeegee supports effective color-coded cleaning protocols. Reliable, strong, and suited for the hygienic sector.

PROPERTIES

- Glassfibre reinforced frame
- ACME or EU thread
- HACCP color coding available

SIZES

- 45cm / 18"
- 60cm / 24"
- 75cm / 30"





Mono Floor Squeegee

➤ HYGIENIC/FOOD GRADE

The '**Mono Squeegee**' is engineered for environments where hygiene is non-negotiable, such as restaurant kitchens and the food industry.

Its **one-piece, groove-free design** eliminates areas where dirt and bacteria can accumulate, ensuring maximum cleanability.

Glass-fiber reinforced for superior strength, fully autoclavable, and **FEIBP certified**, the Mono Squeegee meets the highest hygiene standards.

Available in sizes from 30 cm to 70 cm, it delivers uncompromising performance where cleanliness truly matters.

PROPERTIES

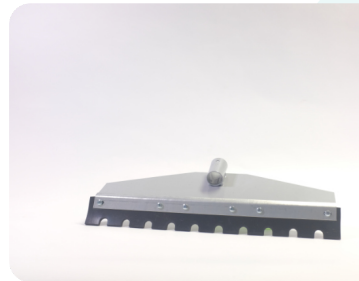
- Glassfibre reinforced frame
- ACME or EU thread
- HACCP color coding available

SIZES

- 40cm / 16"
- 50cm / 20"
- 60cm / 24"
- 70cm / 28"







Construction and industry

Traditional Floor Squeegee

➤ CONSTRUCTION AND INDUSTRY

Featuring a robust **galvanised steel frame** and a tapered handle holder, this Traditional Squeegee is equipped with a **single-bladed neoprene rubber** designed for extreme working conditions.

Ideal for **construction sites**, this squeegee excels at pushing stone debris, sand, soil, mud, and large volumes of dirt. It is also highly effective for **snow removal** and can be used during **asphalting works** to spread and level materials.

Available with a **straight or curved frame**, allowing optimal performance depending on the surface and application.

PROPERTIES

- Galvanised steel frame
- Tapered handle holder
- Single-bladed neoprene rubber
- Designed for heavy-duty industrial and construction use
- Straight or curved frame available

SIZES

- 45cm / 18"
- 60cm / 24"
- 90cm / 36"





Asphalting Squeegee

➤ CONSTRUCTION AND INDUSTRY

The **Asphalting Squeegee** is built with a **galvanised welded steel frame**, ensuring maximum strength, stability, and long service life under demanding conditions.

The handle holder fits most standard handles and provides a **secure connection** during intensive use.

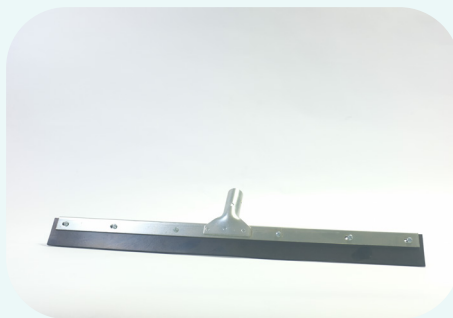
Equipped with a **single-bladed black neoprene rubber**, this squeegee is ideal for spreading, pushing, and levelling asphalt on roads, driveways, and other paved surfaces.

PROPERTIES

- Galvanised welded steel frame
- Handle holder fits most handles
- Single-bladed neoprene rubber
- Designed specifically for asphalting applications

SIZES

- 45cm / 18"
- 60cm / 24"





Notched Squeegee

➤ CONSTRUCTION AND INDUSTRY

The **Notched Adhesive Squeegee** is designed for precise and even **glue application**. It features a rubber blade with evenly spaced crescent-shaped notches, allowing adhesive to be pulled in clean, parallel lines for consistent coverage.

To suit different adhesives, viscosities, and application requirements, **multiple notch patterns** are available, allowing professionals to choose the optimal glue distribution for each job.

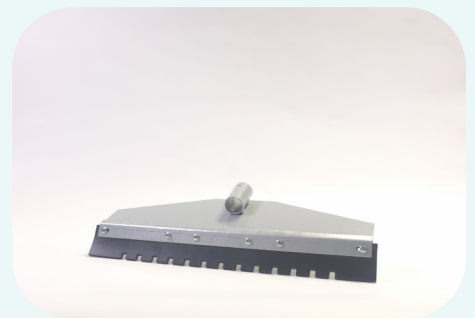
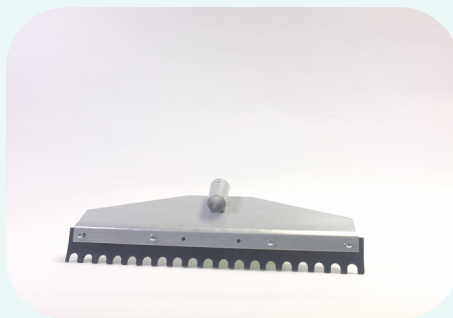
Built with a **robust steel frame** and a handle holder compatible with most standard handles, this squeegee is ideal for flooring installation, bonding applications, and industrial gluing work where **accuracy and material control** are essential.

PROPERTIES

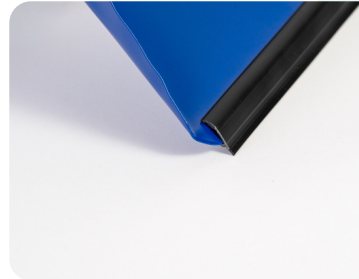
- Galvanised welded steel frame
- Handle holder fits most handles
- Single-bladed neoprene rubber
- Designed specifically for asphalting applications

SIZES

- 45cm / 18"
- 60cm / 24"







Dustpans & sets

Metal Dustpan

➤ DUSTPAN & SETS

The **Metal Dustpan** is designed for demanding professional use and is equally well suited for outdoor and garden applications.

Made from **fully galvanized** steel, it offers high resistance to bending, impact, and corrosion, even when used in rough environments.

It allows to lift **loads up to 4 kg** without deformation, making it ideal for collecting soil, gravel, leaves, and heavy debris. Available in 0.6 mm to 0.8 mm thicknesses, this dustpan delivers reliable performance in both industrial and garden settings.

PROPERTIES

- Strong fully metal dustpan
- Can lift up to 4 kg without bending
- Available in thicknesses from 0,6mm to 0,8mm
- Galvanised





Wooden Handle Dustpan

➤ DUSTPAN & SETS

The **Metal Dustpan with Wooden Handle** is designed for heavy-duty professional use in industrial, workshop, and outdoor environments.

Made from **robust steel**, it offers excellent resistance to bending and wear, allowing it to lift **loads up to 4 kg** without deformation. Available in 0.6 mm and 0.8 mm thicknesses, the dustpan is offered in both galvanized and coated versions.

The **wooden handle** provides natural insulation, making it more comfortable to work with compared to a fully metal dustpan, particularly during prolonged use or in colder conditions. The coated version is available in Black, Red, Green, Blue, and White.

PROPERTIES

- Strong metal dustpan with wooden handle
- Can lift up to 4 kg without bending
- Available in thicknesses from 0,6mm to 0,8mm
- Galvanised or coated
- The isolating wooden handle makes it more pleasant to work with compared to a fully metal dustpan
- The coated version is available in the colors Black, Red, Green, Blue and white





Coal Shovel

➤ DUSTPAN & SETS

The **Coal Shovel** features a compact design, making it smaller and more manageable than a standard dustpan while remaining **highly efficient** when handling **bulk materials**.

Manufactured from **robust steel**, it is available in black coated or galvanized finish for durability and corrosion resistance.

Thanks to its practical shape and controlled scoop size, it is well suited for **coal, grit, crushed stone**, and various types of animal feed, such as pellets and grains. Reliable and easy to handle, this shovel is ideal for use in agricultural, industrial, workshop, and outdoor environments.

PROPERTIES

- Smaller design compared to the standard dustpan
- Available in black coated or galvanized steel
- Practical to shovel coal or grinded stones.
- Comes in two sizes.





Coated Dustpans

➤ DUSTPAN & SETS

The **Powder-Coated Metal Dustpan** is identical in construction to our fully metal dustpan, offering the same strength and durability with the added benefit of a **protective powder coating**.

This coating improves resistance to wear and corrosion and allows for **visual differentiation** or color coding. The dustpan is available in a selection of standard stock colors for fast delivery.

Custom colors are possible on request, subject to a minimum order quantity of 10,000 pieces. A practical and robust solution for **professional, industrial, and outdoor cleaning** applications.

PROPERTIES

- Strong fully metal dustpan
- Can lift up to 4 kg without bending
- Available in thicknesses from 0,6mm to 0,8mm
- Standard coatings available
- Custom coatings MOQ 10,000





Dustpan Sets

➤ DUSTPAN & SETS

Every dustpan can be supplied with a **coco banister**.
We can also offer other banister sets with different filaments than coco fibre.

In addition, these sets are available in a **promotional display box**.

Please **contact us** for more information.

PROPERTIES

- Coco fibre filled banister
- 100% FSC







Hoogleedsesteenweg 442
8800 Roeselare
+32 51 22 69 06
racletta@racletta.be
BTW BE0450.906.478
www.racletta.be

